



WWDA
youth
network

Women With Disabilities Australia

Youth Advisory Group

Application form

Easy Read version





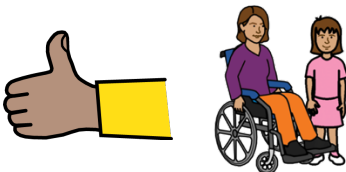
About WWDA

We are **Women with Disabilities Australia**. We will write **WWDA** when we talk about us.

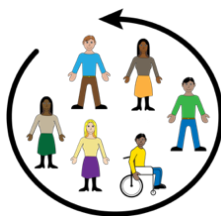


WWDA Youth is a group run by WWDA for young women, girls and non-binary young people who:

- are under 30
- have a disability.



The **WWDA Youth Network** supports young women and girls with disability have good lives.



WWDA is starting a WWDA Youth Advisory Group.

You can read about this in the **WWDA Youth Advisory**

Group Terms of Reference on the WWDA Youth

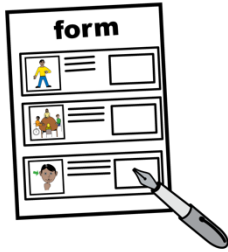
Network website at: [http://youth.wwda.org.au/wwda-](http://youth.wwda.org.au/wwda-youth-advisory-group/)

[youth-advisory-group/](http://youth.wwda.org.au/wwda-youth-advisory-group/)



About this form

WWDA is inviting young women and non-binary young people with disability to apply to join the WWDA Youth Advisory Group.



You can apply using this form.



This form is an **Easy Read** version of an online form. You can find the online form at:



Some words in this form are **bold** and underlined.

We explain these words mean at the end of the form.



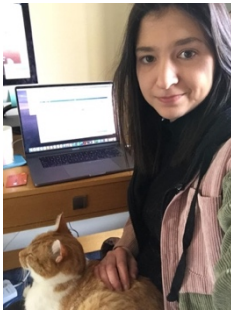
You can ask for help to read and complete the form.

A support person may be able to help you.



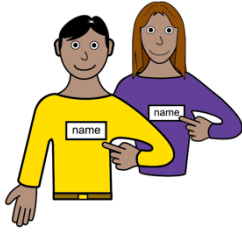
Contact us

You can contact us if you have any questions or would like us to help you complete this form.



Contact our Project Officer, Heidi:

- email po@wwda.org.au
- call **0448 417 850**



About you

My name is



I was born on

Write the day / month / year



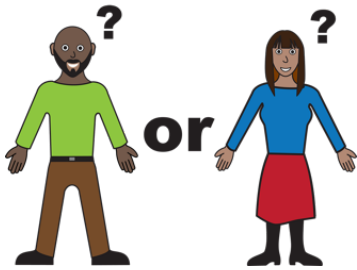
I live at



My phone number is



My email is



My gender is:

Male

Female

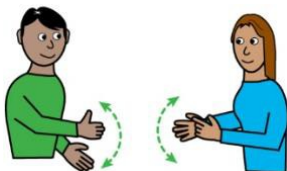
Non-Binary

Other



My main language is:

English



Auslan

Other





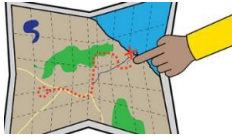
I am:



Aboriginal or Torres Strait Islander



Lesbian, Gay, Bisexual, Transgender,
Intersex, Queer or Asexual (LGBTIQ+)



From a rural, regional

or remote area

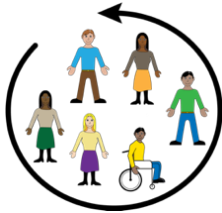


A migrant or refugee.



Your skills and experience

I am good at:



I would like to join the WWDA Youth Advisory Group

because:

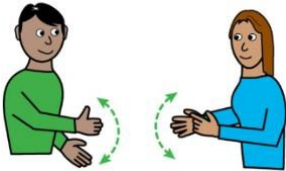


Your support needs

The WWDA Youth Advisory Group will meet online using zoom.



To take part in zoom meetings I need:



An Auslan interpreter



Captions or subtitles



A support person

Other





To understand information, I need:



Easy Read



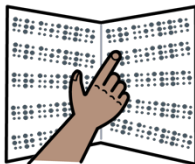
Large print



A screen reader



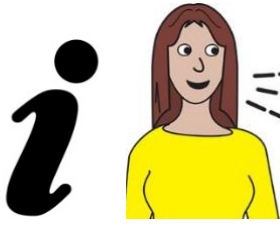
A support person



Braille

Other



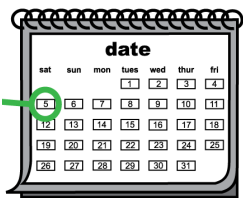


Is there anything else you would like to tell us?

Please write it in the space below:

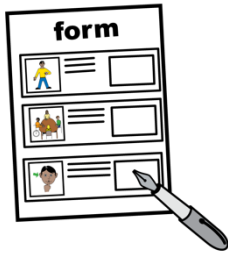


Your signature



= ?

Date today (Date/Month/Year)



How to send us your form

Send the completed form to us by:



- email: po@wwda.org.au

or



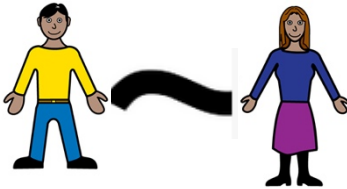
- post:

Po Box 407.

Lenah Valley TAS 7008.

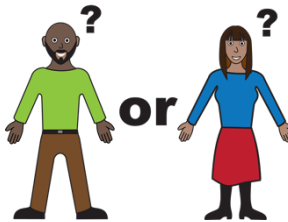


Word list



Non-Binary

Non-Binary is what we call the **gender** of people who do not identify as male or female.



Gender

Your gender It is about how you see yourself or how you identify Like you can identify as a man or woman.

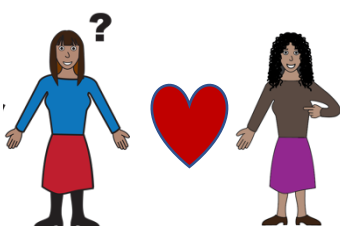


LGBTIQA+

LGBTIQA+ means diverse sexualities and genders.

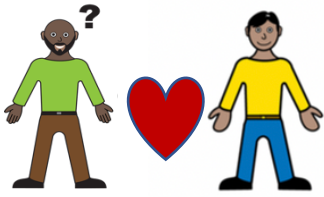
The letters in **LGBTIQA+** stand for **Lesbian, Gay, Bisexual, Transgender, Intersex, Queer and Asexual.**

We explain these words below.



Lesbian

A woman who has romantic feelings for other women.



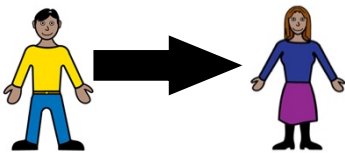
Gay

A man who has romantic feelings for other men.



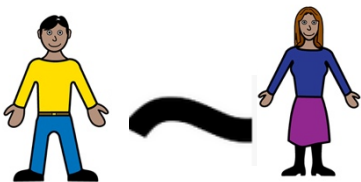
Bisexual

A person who has romantic feelings for more than one gender.



Transgender

A person whose gender does not match the sex they were given at birth. For example, a person who is a woman, but was born male is transgender.



Intersex

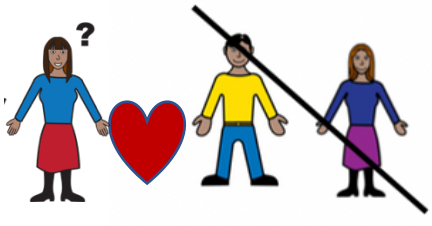
A person whose body is not male or female.



Queer

Another word used to talk about the LGBTIQ+ community.

Asexual



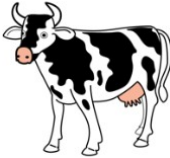
A person that does not have sexual feelings for other people.

Rural



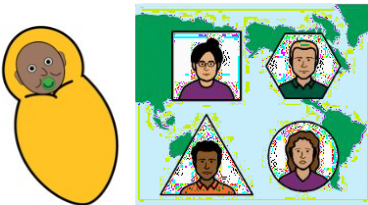
Places that are rural are away from the city.

You may live in a rural place if you live:



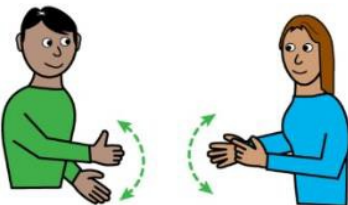
- on a farm
- in a small town.

Migrant or Refugee



A migrant or Refugee s someone who lives in a different country to where they were born.

Auslan



Auslan is the sign language people use in Australia if they are deaf or find it hard to hear.



Zoom

A program that allows you to run or join a meeting online.



Zoom can be used on:

- a computer or laptop
- a smart phone
- on a tablet or iPad.



Thank you

Who wrote this book?

Women with Disabilities Australia wrote this document in 2020.

This document is for information only.

Copyright

© Copyright

Women with Disabilities Australia (WWDA) Inc. 2020.

All intellectual property rights, including copyright and patents, in this book is owned and licensed by Women with Disabilities Australia Inc.

The images used in this fact sheet

Easy on the I Images © 2018 Leeds and York Partnership NHS Foundation Trust. Used with permission.

www.easyonthei.nhs.uk

Disabled People's Organisations logos. Used with permission.