

# Women With Disabilities Australia



## WWDA LEAD National Summit Co- Design Committee

### Expression of Interest Form



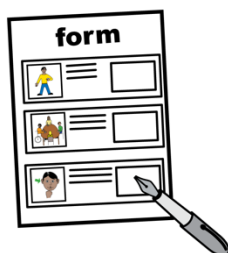
## About this form



WWDA is inviting women and non-binary young people with disability to show interest in joining the WWDA LEAD Summit Codesign Committee.



You can read about the Co-Design Committee in our Easy Read book: Leadership Toolkit Co-design Committee Terms of Reference



You can apply for the committee using this form.



This form is an **Easy Read** version of an online form.

You can find the online form at:



Some words in this form are **bold** and underlined.

We explain these words mean at the end of the form.



You can ask for help to read and complete the form.

A support person may be able to help you.



## Contact us

You can contact us if you have any questions or would like us to help you complete this form.



Contact our Project Manager, Saph:

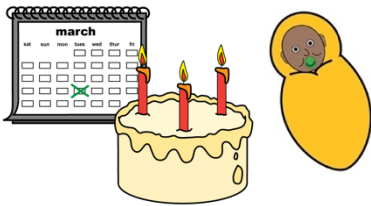
- email [lead@wwda.org.au](mailto:lead@wwda.org.au)



## About you

My name is

---



I was born on

Write the day / month / year

---



I live at

---



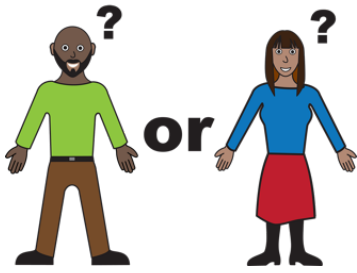
My phone number is

---



My email is

---



My gender is:

Male

Female

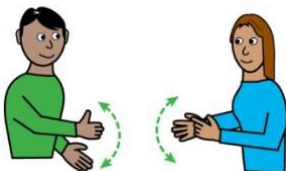
Non-Binary

Other



My main language is:

English



Auslan

Other



I am:

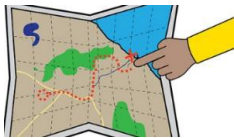
---



Aboriginal or Torres Strait Islander



Lesbian, Gay, Bisexual, Transgender,  
Intersex, Queer or Asexual (LGBTIQ+)



From a rural, regional

or remote area



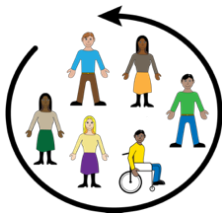
A migrant or refugee.



## Your skills and experience

I am good at:

---



I would like to join this WWDA LEAD Co-Design

Committee because:

---



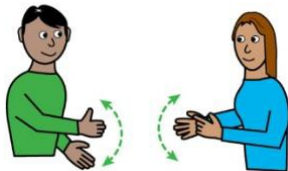


### Your support needs

The WWDA Youth Advisory Group will meet online using zoom.



To take part in zoom meetings I need:



An Auslan interpreter



Captions or subtitles

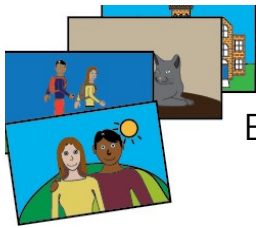


A support person

Other



To understand information, I need:



Easy Read



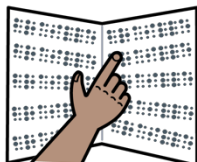
Large print



A screen reader



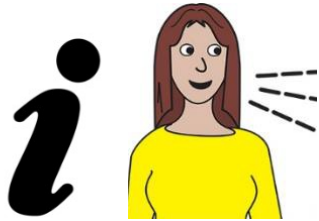
A support person



Braille

Other

---



Is there anything else you would like to tell us?

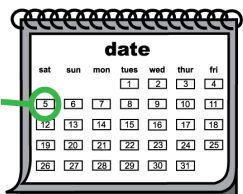
Please write it in the space below:

---



Your signature

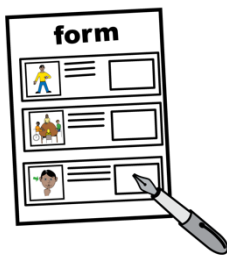
---



= ?

Date today (Date/Month/Year)

---



## How to send us your form

Send the completed form to us by:



- email: [lead@wwda.org.au](mailto:lead@wwda.org.au)

or



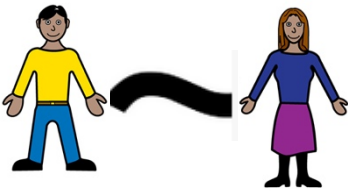
- post:

Po Box 407.

Lenah Valley TAS 7008.

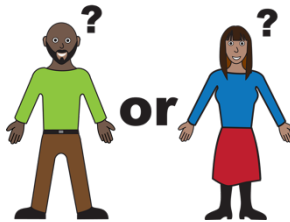


## Word list



### Non-Binary

Non-Binary is what we call the **gender** of people who do not identify as male or female.



### Gender

Your gender It is about how you see yourself or how you identify Like you can identify as a man or woman.

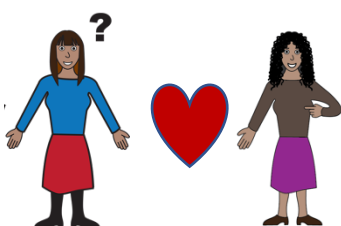


### LGBTIQA+

LGBTIQA+ means diverse sexualities and genders.

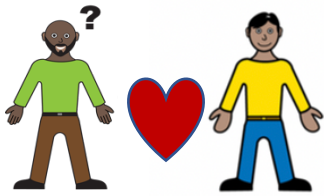
The letters in **LGBTIQA+** stand for **Lesbian, Gay, Bisexual, Transgender, Intersex, Queer and Asexual.**

We explain these words below.



### Lesbian

A woman who has romantic feelings for other women.



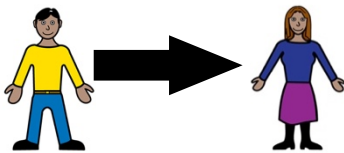
## Gay

A man who has romantic feelings for other men.



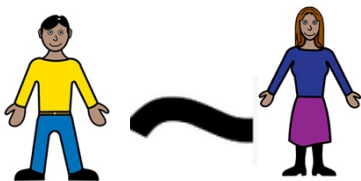
## Bisexual

A person who has romantic feelings for more than one gender.



## Transgender

A person whose gender does not match the sex they were given at birth. For example, a person who is a woman, but was born male is transgender.



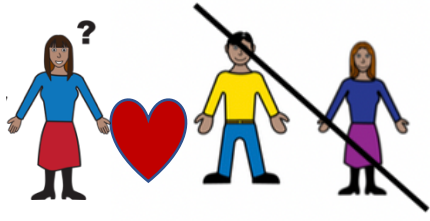
## Intersex

A person whose body is not male or female.



## Queer

Another word used to talk about the LGBTIQ+ community.



## Asexual

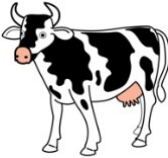
A person that does not have sexual feelings for other people.



## Rural

Places that are rural are away from the city.

You may live in a rural place if you live:

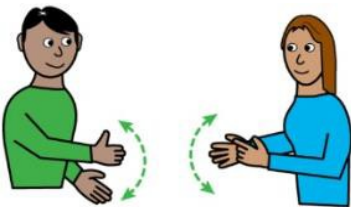


- on a farm
- in a small town.



## Migrant or Refugee

A migrant or Refugee s someone who lives in a different country to where they were born.



## Auslan

Auslan is the sign language people use in Australia if they are deaf or find it hard to hear.



## Zoom

A program that allows you to run or join a meeting online.



Zoom can be used on:

- a computer or laptop
- a smart phone
- on a tablet or iPad.





## Thank you

### Who wrote this book?

Women with Disabilities Australia wrote this document in 2020.

This document is for information only.

### Copyright

© Copyright

Women with Disabilities Australia (WWDA) Inc. 2020.

All intellectual property rights, including copyright and patents, in this book is owned and licensed by Women with Disabilities Australia Inc.

### The images used in this fact sheet

Easy on the I Images © 2018 Leeds and York Partnership NHS Foundation Trust. Used with permission.

[www.easyonthei.nhs.uk](http://www.easyonthei.nhs.uk)

Disabled People's Organisations logos. Used with permission.